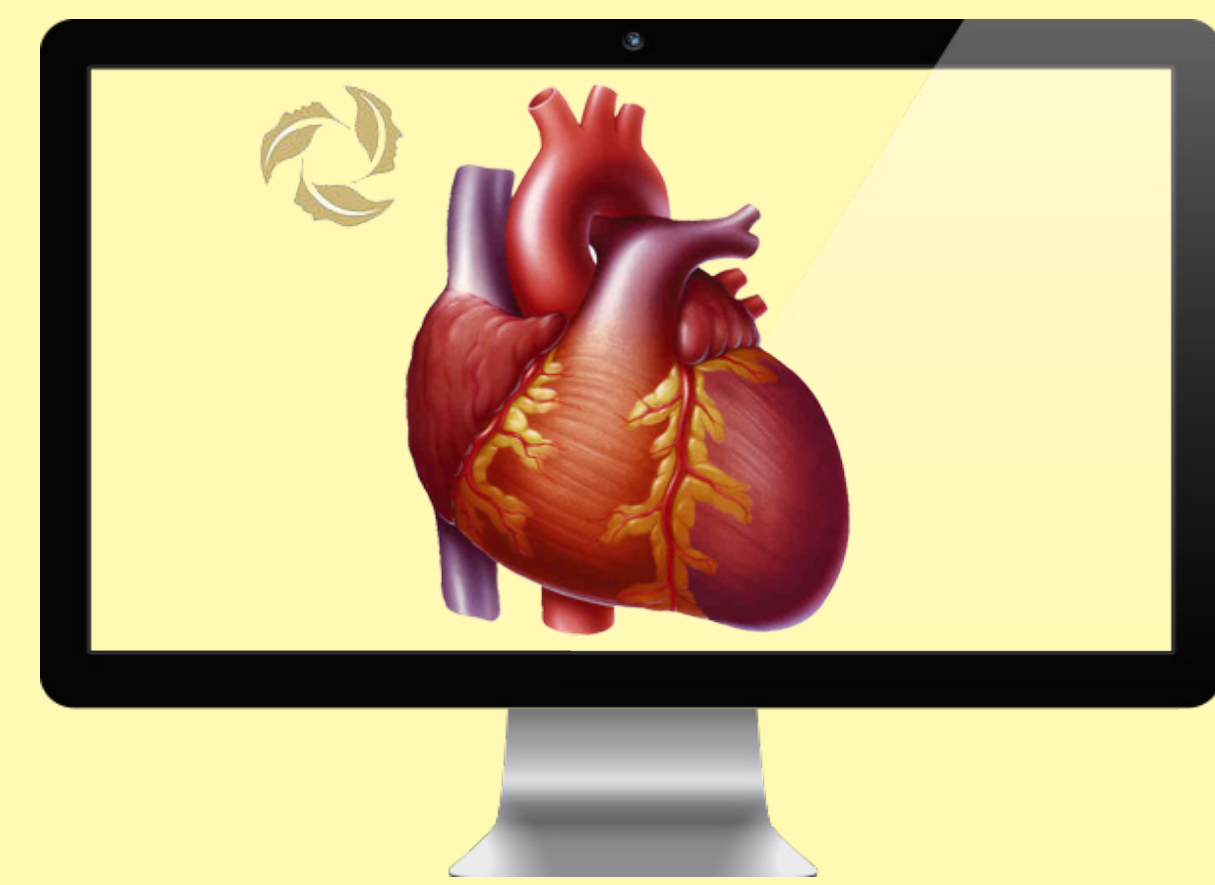




# MODERATED E-FORUM

## A FORUM INTEGRATED TO AN INTERNET-BASED SOFTWARE

Jacqueline Bermudez  
Applied Research (MScAC)  
Intern, Cardiac eHealth  
  
Academic supervisor  
Prof. Daniel Wigdor



## CHF-CePPORT

An internet-based program to support behavioral self-management in patients with chronic heart failure

NEEDS AN

## e-forum

FOR

## Vision and Goals

- Improve patient's adherence to self care guidelines
- Offer technical support
- Create online community of supportive peers
- Provide ongoing expert support

## UX PROJECT LIFECYCLE

### 1 Personas

Jonh Carter - 58 years old  
Chef  
Uses computers for reading emails and reads news

Carol Smith - 37 years old  
Researcher  
Expert using computers and has knowledge of UX and HTML

Marie White- 28 years old  
Researcher - Advisor  
Comfortable using computers.

Tom Parker - 61 years old  
Manager  
Comfortable using computers

### 2 Stakeholders

Manager

Researchers

Developers

Moderators

Patients

Volunteers

### 3 Interviews



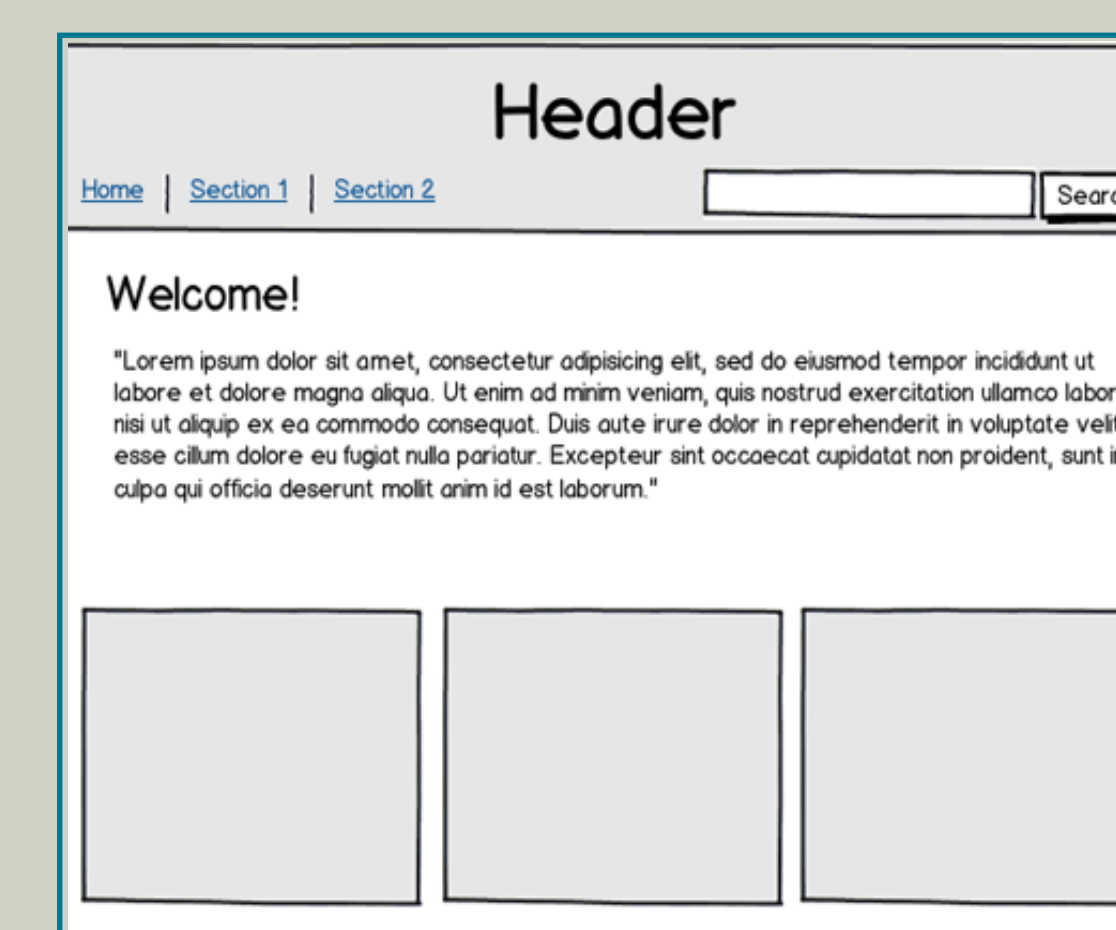
### 4 Requirements

- Policies
- Moderated forum
- Privileges
- User Experience
- Multimedia Information
- Data Collection and Analyses

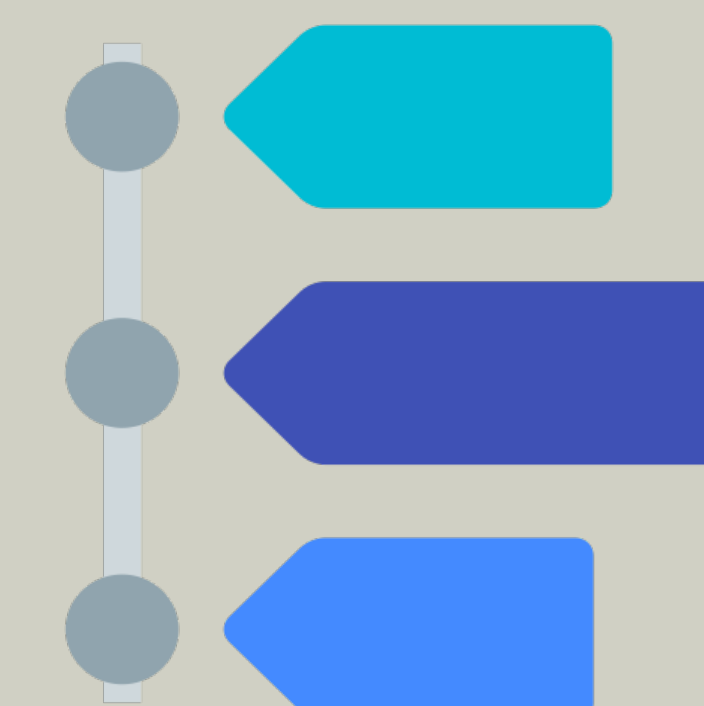
### 5 What to develop?

- Administrator Portal
- Patient Portal
- Moderator Portal

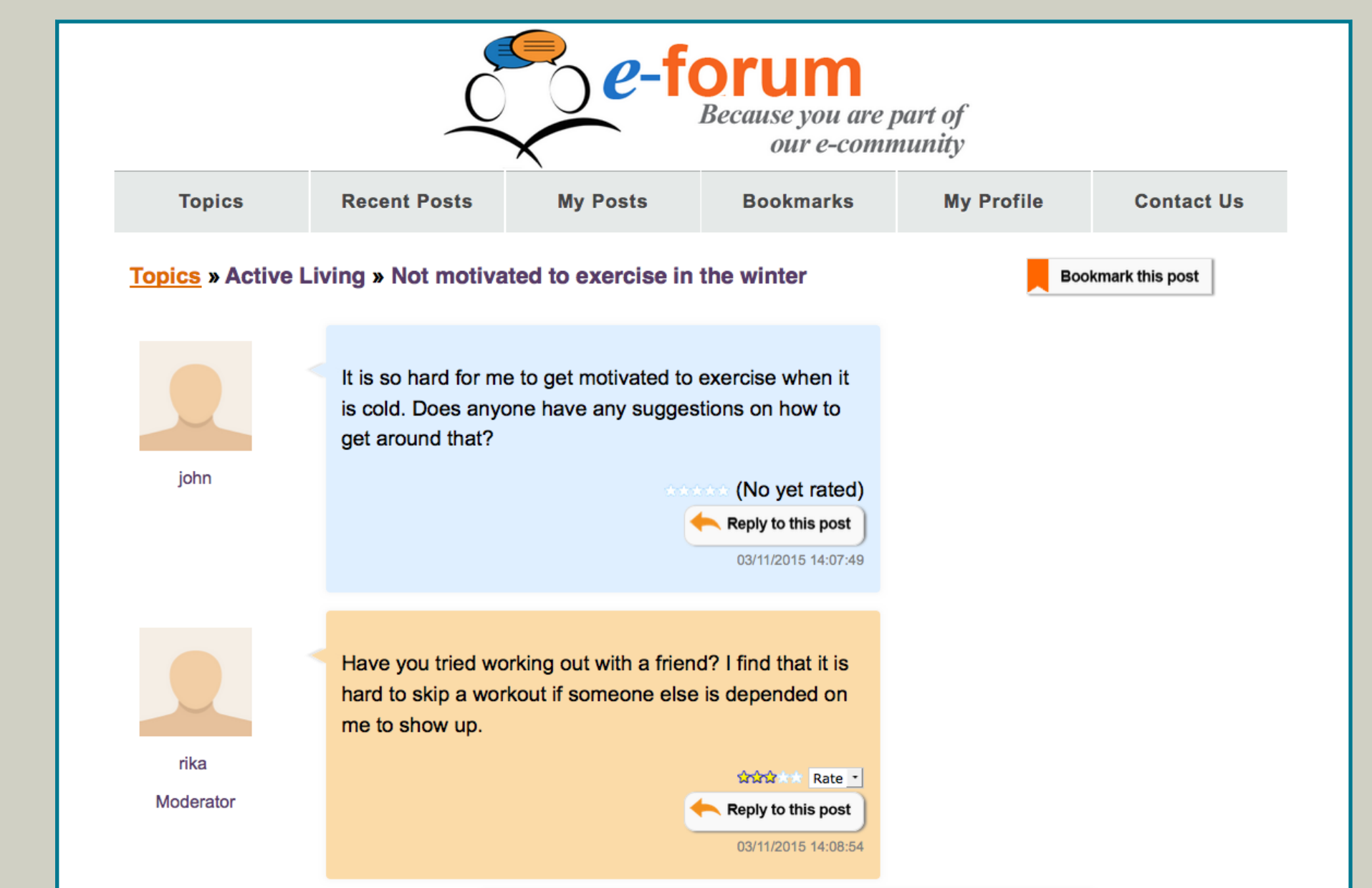
### 6 Wireframes



### 7 Timeline



### 8 e-forum's design



### 9 Ongoing and iterative revisions



### 10 Future work:

- User Study
- Testing
- Understanding the next steps
- Validating the e-forum